



RFU CHAMPIONSHIP STATS

STANDINGS

For the first time since December 12th every team was in action in Week 19. 4 teams were also in action in midweek; Nottingham recorded two narrow home wins to move up to 5th position while Birmingham lost twice, though they pushed Moseley all the way at Billesley Common on Saturday. Doncaster also lost twice, while Rotherham won one and lost one to move above the Knights and into 9th position.

This weekend, both Bristol and Exeter Chiefs gained bonus point wins as they battle it out for top spot. Cornish Pirates also earned 5 points to close the gap on London Welsh in third. Bedford's loss at Exeter means they drop two positions over the week but they stay in a cluster of 4 teams separated by 4 points.

	P	W	D	L	F	A	Diff	B Pts	Pts
Bristol Rugby	17	15	0	2	489	267	222	12	72
Exeter Chiefs	18	15	0	3	529	302	227	8	68
London Welsh*	18	12	0	6	388	298	90	8	51
↑ Cornish Pirates	18	10	1	7	453	367	86	7	49
↑ Nottingham	16	10	0	6	394	359	35	7	47
↓ Bedford Blues	18	9	1	8	491	352	139	9	47
Plymouth Albion	18	8	0	10	306	391	-85	5	37
Moseley	18	8	0	10	357	449	-92	5	37
<hr style="border-top: 1px dashed black;"/>									
↑ Rotherham Titans	17	5	0	12	327	408	-81	11	31
↓ Doncaster Knights	16	6	0	10	264	278	-14	6	30
Coventry †	17	4	1	12	271	402	-131	5	8
Birmingham & Solihull †	17	0	1	16	246	642	-396	4	-9

* London Welsh deducted 5 points

† Birmingham & Solihull and Coventry deducted 15 points

In Stage 2 of the RFU Championship, clubs in yellow will play in Pool A, clubs in green will play in Pool B. The clubs below the dotted line will play in Pool C.

THIS WEEK'S RESULTS

Wednesday 20th January

Nottingham 27 – 21 Doncaster Knights

Rotherham Titans 42 – 15 Birmingham & Solihull

Saturday 23th January

Coventry 16 – 27 Bristol Rugby

Doncaster Knights 10 – 17 London Welsh

Exeter Chiefs 42 – 19 Bedford Blues

Moseley 25 – 24 Birmingham & Solihull

Sunday 24th January

Cornish Pirates 29 – 24 Rotherham Titans

Nottingham 20 – 19 Plymouth Albion

UPCOMING FIXTURES

Saturday 30th January

Bedford Blues – Cornish Pirates

Birmingham & Solihull – Doncaster Knights

Exeter Chiefs – Nottingham

London Welsh – Coventry

Rotherham Titans – Moseley

Sunday 31st January

Bristol Rugby – Plymouth Albion



POINTS

TOP TRY SCORERS

Player	Club	Tries
Dan Norton	Bristol	11
Blair Cowan	Cornish Pirates	10
Errie Claasens	London Welsh	10
Tom Arscott	Bristol	9
Matthew Jess	Exeter	9
Luke Fielden	Bedford	7
Ian Davey	Bedford	7
Richard Baxter	Exeter	7
Nathan Bressington	Moseley	7
Robert Cook	Cornish Pirates	6

Hat-Tricks

Ian Davey	Bedford Blues v Birmingham & S	10 th October 2009
Richard Baxter	Exeter Chiefs v Rotherham Titans	24 th October 2009
Tom Arscott	Bristol v Coventry	30 th October 2009
Errie Claasens	London Welsh v Moseley	17 th January 2010

TOP POINTS SCORERS

Player	Club	Try	Conv	Pen	Drop	Total Pts
Gareth Steenson	Exeter		37	30		164
Tristan Roberts	Moseley	1	15	42	1	164
James Pritchard	Bedford	4	28	24		148
Aled Thomas	London Welsh	2	18	34		148
Adrian Jarvis	Bristol		32	27		145
Jonny West	Rotherham		12	28	3	117
Robert Cook	Cornish Pirates	6	19	15		113
Greig Tonks	Nottingham	1	21	20		107
Kieran Hallett	Plymouth	4	12	16	2	98
Alistair Warnock	Doncaster	1	16	12	3	82

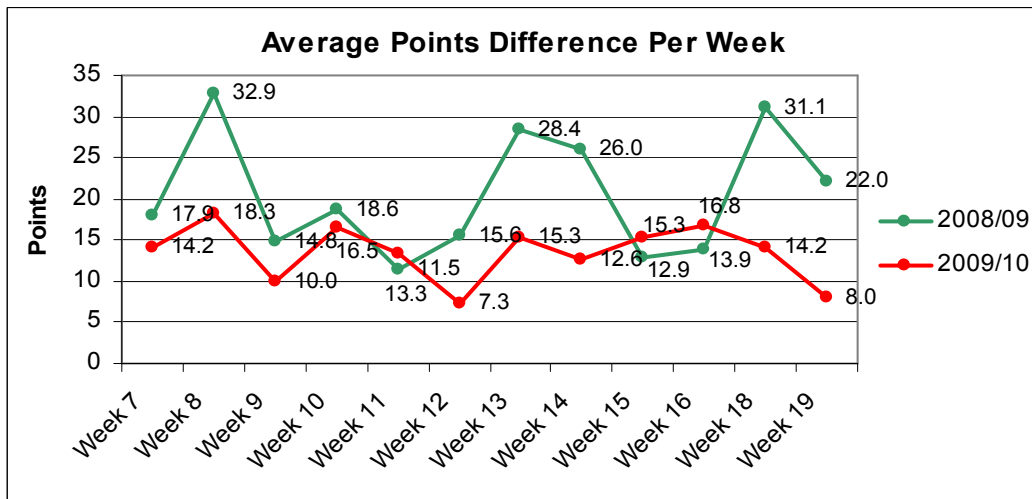
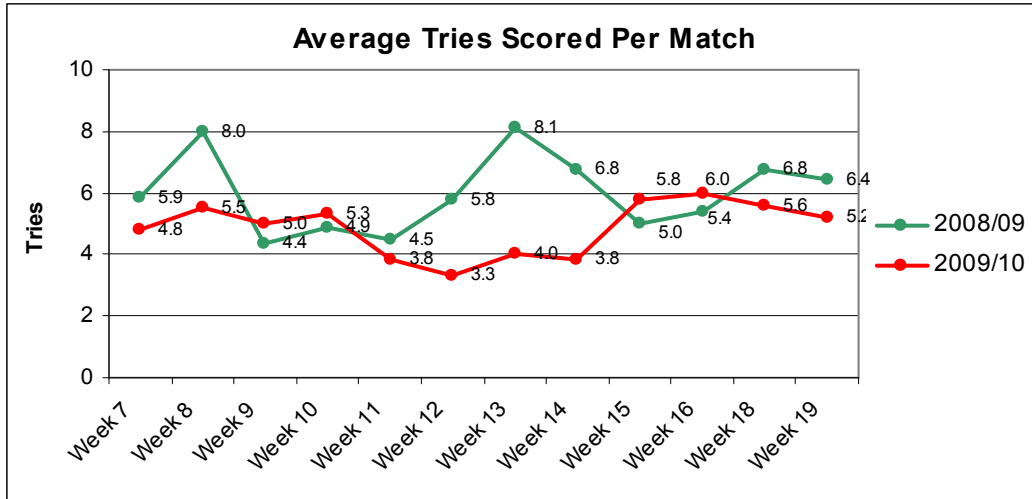
TRIES BY CLUB

	Weeks 1-13	Week 14	Week 15	Week 16	Week 18	Week 19	Total
Bristol	48	5	4	5	P	5	67
Exeter	51	1	1	2	3	6	64
Bedford	39	1	3	8	6	3	60
Cornish P	35	3	7	2	5	4	56
Nottingham	41	0	P	P	3	2	46
London Welsh	33	3	2	2	3	1	44
Moseley	27	0	2	3	0	1	33
Plymouth A	26	2	1	1	2	1	33
Coventry	25	2	3	P	0	1	31
Rotherham	19	4	P	P	2	4	29
Birmingham	18	0	P	1	4	2	25
Doncaster	22	2	P	P	P	1	25
Total	384	23	23	24	28	31	513



TRY SCORING TRENDS

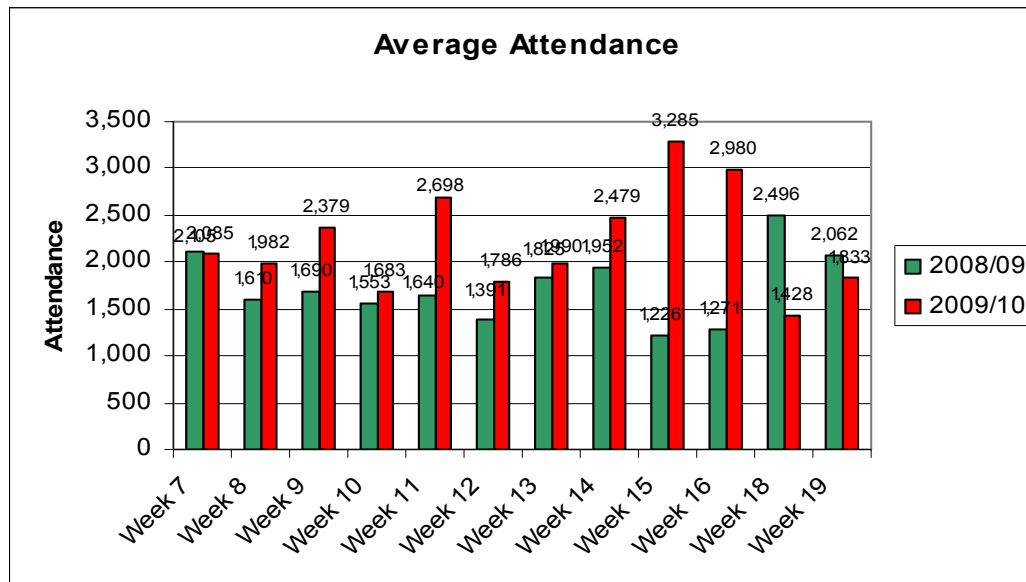
4 teams gained losing bonus points this weekend, demonstrating once again how close the RFU Championship has been this season. Bristol and Exeter led the way in terms of try scoring with 5 and 6 respectively, with Cornish Pirates and Rotherham also picking up an extra point apiece in their fixture.





ATTENDANCES

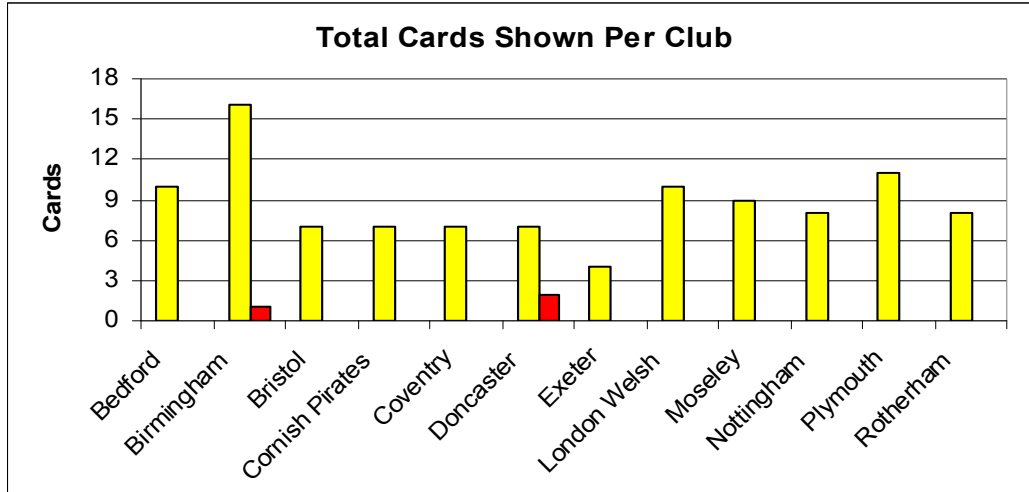
There were lower than average attendances for the second week running in the RFU Championship, but the rugby on offer suggests that those spectators who stayed away missed out on an excellent afternoon's entertainment.



ATTENDANCE FIGURES

	12-Dec	19-Dec	26-Dec	02-Jan	16-Jan	23-Jan	Season Total
Bedford	2353		4033		2,088		24,152
Birmingham & S	407	PP		407	916		5,370
Bristol		4869		7,714	PP		48,020
Cornish Pirates	2667		5654			2459	25,217
Coventry		802		PP		1240	11,694
Doncaster		1334				1250	12,985
Exeter	3952		7405			3781	38,147
London Welsh		961		1,632	910		12,847
Moseley			998			1051	8,288
Nottingham	1303		808			1218	10,626
Plymouth		4430		2,168	2,151		26,493
Rotherham	1257		812	PP	1,076		9,733
Weekly Total	11,939	12,396	19,710	11,921	7,141	10,999	233,572
Average	1,990	2,479	3,285	2,980	1,428	1,833	

Highest 7,714 Bristol v Cornish Pirates January 1st
 Lowest 367 Birmingham v Exeter Chiefs October 17th

DISCIPLINE

CARDS BY TYPE

Week 18	Yellow Cards			Red	Total Cards
	Technical	Foul Play	Total		
2008/09	4	3	7	0	7
2009/10	6	1	7	0	7

Season	Yellow Cards			Red	Total Cards
	Technical	Foul Play	Total		
2008/09	115	48	163	5	168
2009/10	60	44	104	3	107

CARDS BY CLUB

By Club	Yellow	YR	Red	Total
Bedford	10			10
Birmingham	16		1	17
Bristol	7			7
Cornish Pirates	7			7
Coventry	7			7
Doncaster	7	1	2	9
Exeter	4			4
London Welsh	10			10
Moseley	9			9
Nottingham	8			8
Plymouth	11			11
Rotherham	8			8
Total	104	1	3	107